

G300

eco  car
electric vehicles



**THE FUTURE
IS ELECTRIC**



**JOIN
THE RIDE!**

G300

Versions: Line G092L | Premium G138P | Executive G168E



freedom future



economy ecology



Vehicle size - Weights	Line G092L	Premium G138P	Executive G168E
Overall outside dimensions LxWxH (mm)		2910X1480X1640	
Wheelbase (mm)		1930	
Track width front/rear(mm)		1295/1290	
Loading area dimensions LxWxH (mm)		1080x1200x640	
Passengers		2	
Doors		3	
Gross vehicle weight (kg)	737	754	755
Payload (kg)		270	
Ground distance (mm)		135	

Motor - Battery	Line G092L	Premium G138P	Executive G168E
Motor power (kW/rpm)		15/4500	
Torque (Nm)		100	
Type of motor		PMAC motor	
Motor position - driving wheels		rear - rear	
Energy consumption (kWh/100km)	7,2	7,9	7,9
Battery type		lithium	
Battery capacity (kWh)	9,2	13,8	16,8
Charging time (h)		6 - 8	
Energy regeneration system			



Performance

Line G092L

Premium G138P

Executive G168E

Maximum speed (km/h)		90	
Maximum range (km)	up to 122	up to 179	up to 220
Maximum climbing ability		20%	
Approach angle (o)		31	
Departure angle (o)		42	

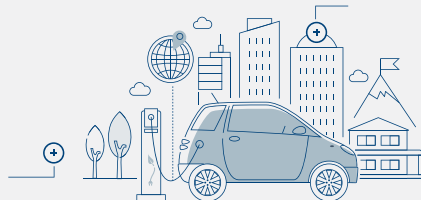
Suspension - Tyres & wheels Brakes - Steering system

Line G092L

Premium G138P

Executive G168E

Front suspension	macpherson independent suspension		
Rear suspension	non independent		
Tyres	145/70 R12		
Steel wheels with full cover	12"		
Brakes front/rear	front disc and rear drum hydraulic double circuit braking system		
ABS			
Electronic brake distribution EBD			
Energy regeneration system			
Electrically assisted steering (EPS)			





Comfort equipment	Line G092L	Premium G138P	Executive G168E
Sport driving mode selection			
Reading light front			
Driver and co driver sun visors			
Electrically adjusted front windows			
Remote controlled central door locking			
Aircondition (A/C) - 4 speed fan			
Cabin heating system - 4 speed fan			
Storing door pockets			
Storing nets under the dashboard			
Cup holder on the dashboard			
Cruise control	N/A		
Multifunction steering wheel	N/A		
Supply 12V			
System "Find my Car"			
Board Computer	N/A		

Interior	Line G092L	Premium G138P	Executive G168E
Sport type seats			
Seat upholstery	fabric	twin colour fabric	twin colour fabric
Steering wheel cover	synthetic	leather	leather
Front-rear adjusted seats			
Back seat adjusted			
Floor mats			



Control instruments - Connectivity

	Line G092L	Premium G138P	Executive G168E
Intelligent driver colour display instrument	8 inch	7.0 inch	7.0 inch
Multimedia touch screen display	N/A	9.0 inch	9.0 inch
Radio Receiver FM/AM	N/A	✔	✔
Bluetooth smartphone connectivity	N/A	✔	✔
USB port	N/A	✔	✔

Safety equipment

	Line G092L	Premium G138P	Executive G168E
Driver airbag	N/A	✔	✔
Rear parking sensors	N/A	✔	✔
Rear view camera	N/A	✔	✔
Factory fitted alarm with panic function	✔	✔	✔
Low speed warning buzzer (up to 20km/h)			
Hill start assist	✔	✔	✔
Three point automatic seat belts	✔	✔	✔
Tyre pressure monitoring system (TPMS)	✔	✔	✔

✔ standard | N/A not available



G300

External lights - Colours	Line G092L	Premium G138P	Executive G168E
Halogen headlamps	✔	✔	✔
Headlamp height adjustment	✔	✔	✔
Rear fog light	✔	✔	✔

Choose your color



eco  car
electric vehicles

by eco  sun



Athens: 448 Heraklion Ave., 141 22 N. Heraklion | T: +30 210 6859011 | Greece

Thessaloniki: 14 km Thessaloniki - Perea, 570 01, PO BOX 60020 | T: +30 2310 32791 | Greece



www.ecocar.city



ecocar.city



ecocar.city



ecocar.city